



Weare in the World

For Weare Residents, By Weare Residents

March 26, 2025



Kaison's Sugar House in Weare boils sap on "Maple Weekend" (Alyssa Small photo).

Inside the Issue

p. 2-3: School news
p. 4: Library and events
p. 5: Events
p. 6: Senior Center, poetry
p. 7: Poetry, calendar

To view back issues of *Weare in the World*, go to www.weareintheworldnews.com.

Weare Community Theater Presents



Saturday, April 12

2 p.m. and 7 p.m.

Weare Town Hall

16 N. Stark Highway, Weare

Three bored history students stumble into a mysterious time portal that whisks them back to 1780. Their 21st-century attire and belongings lead to one student being accused of spying and another of witchcraft. They learn their lesson in more ways than one! *Free to attend.*

Cast includes:

 Ezra King	 Kelila Tanner	 Jim Curley	 Sofia Gomez
 Addie Lussier	 Ashley King	 Michael Zogopoulos	 Jesse King
 Daisy King	 Carol Mejia	 Liz Zogopoulos	 Emma Koski

And more!



School News



WMS seventh grader **Myla Small** was last week named among the top three student speakers in the state following her remarks about reducing screen time during the N.H. Civics/Mikva "Project Soapbox" Challenge. Small won the school-level competition in February, which landed her in the round last week. Of the eight total students in New Hampshire who advanced, three were named top finishers: Small, a student who gave a speech about hidden disabilities and another who spoke about substance misuse. The link to watch the event is [here](#). Next, a "Soapbox Nation" team will decide which of the three will be chosen to attend a national event in Washington D.C. in May. "Project Soapbox," is a program of the Mikva Challenge, a nonpartisan organization that strives to empower, inform and activate young people in the area of civics. The speech contest is designed to give youth a platform to voice their opinions and propose action on current issues.



A presenter from **The New Hampshire Telephone Museum** visited CWES third graders last week, sharing artifacts, books and hands-on activities related to inventions that have helped communication evolve. The presentation was arranged to help meet a social studies standard about exploring the impact of important technological inventions, said third grade teacher Julie Caterino. The museum, located in Warner, offers educational visits to local schools highlighting "important moments in telephone history, such as the race to the patent office, the undertaker who invented the dial system," and other notable innovations, according to its website. *Photo: Fiona Donnelly and Alaina Tobias attempt a listen with historic telephone equipment.*



CWES first graders wrapped up their **"Creature Features"** unit this past week by showing off their animal dioramas during a gallery walk. Families and CWES kindergarten classes were welcomed to view the dioramas while first graders answered their questions. Also in the unit, students read stories about different animals with special features, visited with live animals, and wrote informative paragraphs. *Photos: First grader Isabella Graham shows kindergartener Alex Babicz her animal diorama as Felipe Hayashi Rico looks on. R.J. St. Onge displays his project on the caracal.*



Members of the **John Stark Stage Company** performed a showcase of Broadway tunes and a one-act play on March 14 and 15. The showcase included song and dance numbers from "Waitress," "Alice by Heart,"

"Mean Girls," "Spamalot," "Newsies," "Hairspray" and others. JSRHS Alum Lindsey Brunelle – who now teaches musical theatre and runs her own performance business – assisted with choreography, and JSRHS students designed some of their own. Several WMS and HCS students also performed. The one-act play, "Soundscapes,"



tells the story of "Iris," a middle school girl (played by senior Emma Guillemette) who doesn't yet

know she has synesthesia, a condition in which she sees colors and shapes when music plays. Freshman Miles Green played "Tony," a friend who has the same condition. An ensemble represented a chorus of colors, classmates and others. The play – produced by special arrangement with Stage Partners (www.yourstagepartners.com) – was directed by Jen Matzke. The company will bring the play to the New Hampshire Educational Theatre Guild Festival at Coe-Brown Academy on March 29. *Photos: The John Stark Stage Company presents "The King of New York" from "Newsies." The cast of "Soundscapes."*

THEATER CAMPS

MONDAY-THURSDAY 9-3 FRIDAY 1-7 WITH A PERFORMANCE AT 6

JULY 28TH-AUG.1ST: CINDERELLA
AUG. 4TH- AUG.8TH: IMPROV WORKSHOPS
AUG. 11TH- 15TH:DUDLEY DUDLEY A NEW MUSICAL
ABOUT A NH LEGEND

AGES 6-18
WHERE? WEARE MIDDLE SCHOOL

COST IS \$200 A CAMPER WITH DISCOUNTS FOR MORE THAN ONE CAMPER PER FAMILY AND MORE THAN ONE CAMP PER CAMPER. WE PRIDE OURSELVES ON NEVER TURNING A YOUNG PERSON AWAY FOR LACK OF FUNDS AND WE'RE ABLE TO DO THAT BY ASKING AREA BUSINESSES TO MAKE DONATIONS THAT GO TOWARDS SCHOLARSHIPS.

TO SIGN UP CONTACT TOM DUNN AT DUNN.T@COMCAST.NET

Weare PTO Big and Little Dance



CWES families were invited to a "Big and Little Dance" on March 7, which was sponsored by the Weare Friends PTO. The evening featured dancing, contests, crafts, snacks, a photo booth (run by the Weare Police Department) and

volunteers from John Stark Regional High School. *Courtesy photos. Above: Rilynn Wilcox and Lejla Smajovic-Gagnon sandwich a "little" friend. Right: Forest Jenkins and Sebastian Heyman.*



Local Scholarship Opportunities

Campbell Fund



The Eleanor Campbell Charitable Fund is now accepting applications from high school seniors in towns served by Hillsboro-Deering and John Stark High Schools. The Fund awarded 20 scholarships last year in amounts ranging from \$1,500 to \$3,000. Special awards go to a business student, a student of politics or journalism, and

one studying health or medicine. Other awards, based on academic achievement, community participation and financial need, are given to students in a variety of fields. Over time, scholarships have gone to public and private high school students and home schoolers, as well as students in college.

Applications are available through the schools and online at www.eleanorcampbellcharitablefund.org. Details and instructions are included on the website. Specific questions may be addressed to Chris Hague, Scholarship Committee Co-Chair at: wooden_tent@yahoo.com or by calling the number on the application.

Submissions must be received by April 15. Awards are announced in June.

Weare Public Library

PokeMondays (kids). Mondays, 2:30-4 p.m. Meet, trade, and play with other Pokemon card game enthusiasts and win prizes.

Mother Goose Storytimes (ages 0-2). Tuesdays, 10:30-noon (starting April 1). Simple rhymes, stories, and songs for infants and little ones!

Cards! (adults). Tuesdays & Thursdays, 2-4:30 p.m. Meet and play pinochle or cribbage with other card game enthusiasts in the Paige Room.

Anime & Manga Club (ages 10+). 1st & 3rd Tuesdays of the month, 2:15-3:30 p.m. Stop by after school to talk about manga and watch your favorite anime shows!

Pre-K Storytime (ages 3-5). Wednesdays, 10:30 a.m. (starting April 2). Enjoy longer stories, movement and songs followed by a simple craft or related activity.

Afterschool Gaming (ages 6-18). Wednesdays, 2-4:30 p.m. Challenge your friends on the Nintendo Switch, PlayStation and other game systems.

Ruff Readers (ages 5-11). Wednesdays, 5-6 p.m. Emerging readers get to read with one of our visiting therapy dogs. Call us to sign up.

Craft Group (adults). Thursdays, 1-3 p.m. Relax and craft and learn something new.

Baby & Toddler Playgroup (ages 0-3). Fridays, 10:30-noon. An informal gathering for young children and their caregivers. Get out of the house; meet new friends! Books, puzzles, early literacy toys, & music.

Book Group (adults). Wednesday, March 26 at 7 p.m. We're reading and discussing the dystopian classic "Brave New World" by Aldous Huxley. Call 603-529-2044 to reserve.

The passes below are made possible by the Friends of the Weare Public Library! Double click on the icon to explore.



BINGO

**CARRY-OVER COVERALL
PULL-TABS, DAUBERS**

OSBORNE HALL

16 Deering Center Road, Weare

Third Saturday of the month

6:30 p.m. Age 18+ only

Apr. 19 / May 17 / Jun. 21 /

Jul. 19 / Aug. 16 / Sep. 20 / Oct. 18

Refreshments

South Weare Improvement Society

FUNDRAISER FOR OSBORNE HALL

(If you wish to help the Weare Food Pantry, please bring a canned good to our collection box on Bingo night.)

TO RENT THE HALL FOR YOUR EVENT
or for WEARE FLAGS FLY: 603-529-7282.

Holy Cross Happenings

Thank you, people of Weare, for your generous donations to the yellow shed that sits in the parking lot of Holy Cross Church. Your donations of used clothing to the shed in 2024 amounted to 45,724 pounds. This was enough to clothe an estimated 8,423 people all over the world. Just imagine where your shirts, coats, pants, dresses might be today, providing much needed clothes for those less fortunate than us. Additionally, your donations saved the transfer station that many pounds of materials that would have ended up in the compactor. Holy Cross thanks you again, and please keep feeding the yellow shed.



Reminder of bygone windy days (David Collins photo).

Henniker Brewing Company Fundraisers

Annual GSIL Fundraiser

April 5

**129 Centerville Road
Henniker**



GRANITE STATE INDEPENDENT LIVING

Every year, Henniker Brewing raises money for Granite State Independent Living by participating in their wheelchair basketball tournament. Join us and show your support. \$1/pint sold donated directly to them!

HEARTS & TAILS ANIMAL ALLIANCE

It's going to be a great day for our furry friends! \$1/ pint sold donated directly to them!

- 12 p.m. Bluenose Pitmasters Texas Style BBQ
- 2 p.m. Dog Adoption
- 2 p.m. Dog Pageant: Best Dressed / Best Trick

[Register Your Dog](#)

3-5 p.m. Music by Ben Harris



Rabies Clinic for Dogs & Cats

Thursday, April 15 / 6-7 p.m.

Weare Town Hall / 16 N. Stark Highway

\$10 per animal

This clinic serves both dogs and cats. It would be helpful to know your pet's age and weight.

Granite VNA Caregiver Connection

Thursday, March 27 / 10-11 a.m.

Caregiver Connection is an opportunity for family caregivers to support one another and connect with our professional staff. We look forward to providing a safe space to connect with other caregivers facing similar challenges. **Registration is required.** Click [here](#) to register.

**HAND IN
HAND**

**SENIOR CENTER
& THRIFT SHOP**

The Hand in Hand Senior Center is a gathering place for seniors to socialize and get involved in group activities.

33 North Stark Highway, Weare, NH 03281

Wed. - Sat., 11 a.m. - 4 p.m.

603-529-4263 / www.facebook.com/hihsc.org

Over the years, you've read how people, organizations, and businesses have contributed to the success of **Hand in Hand Senior Center**. They have made it possible for us to provide lunches, purchase equipment, have activities, and provide a welcoming atmosphere where semi-retired and retired people can "hang out," make new friends, support each other, and work on ways to help others in our community to stay healthy and strong.

Our population is growing so our needs are growing. **Right now, you could help us stock our small food pantry.** The need is for small cans of meat (chicken, pork, beef), low-sodium vegetables, fruit (packed in juice), peanut butter, small containers of jelly, mustard, ketchup, mayonnaise, and containers of Chef Boyardee. We appreciate your support, and rest assured YOU make a difference.



Last week we held a program sponsored by Granite VNA on "Emotional Well-Being." There was lots of information and some good discussions. All are welcome to

join in on programs and activities.

You are invited to the Center on Monday, March 28 at 5 p.m. You will learn more about the AED (AUTOMATED EXTERNAL DEFIBRILLATOR) that we were able to purchase through a grant and a generous donation. See details in the poster on page 5.

Do you have ideas that would enhance our programs? Do you have a talent that you would like to share with us? Do you have connections with other organizations that would benefit **Hand in Hand** and partner with us? Please reach out by contacting us at 603-529-4263 or email hkurk@hihsc.org. Thank you so much.

Eat


Wednesdays, 11 a.m.-1 p.m. Dine in, take out or free delivery.

March 26: Breakfast for lunch. French toast, sausage patty, fruit. Check [Facebook](#) for later menus.

Coffee, tea, and various desserts are also available. Donations are graciously accepted. All are welcome to stay and socialize, play games and work on crafts.



Looking for Something to Do?

Compiled by Sharon Czarnecki

Don't forget, links to items previously featured here can now be found at: [Looking for Something to Do](#)



POETRY CORNER

Collision

Thick mist filled the air,
temperatures collided,
lake surface still frozen,
air temperature sixty
degrees, inevitable
phenomenon happened,
thick mist rose from thawing
surface, met with warmer air,
so thick there was nothing
to see except thick mist.

-Marge Burke

Sunday Drive

Reminiscent of
my childhood when dad
took us for a drive
after Sunday dinner,
through the countryside
maybe into the city,
today, I drove along
a familiar country road,
emerging from winter's
persona, snow covered
fields, thawing lake surface
leafless trees, ages old
with moss on trunk bark,
multiple trunks from one
beginning, claiming their
place with grace in the
depths of our world.

-Marge Burke

Second Hand

From the local thrift shop second-hand clothes
drape my body; more familiar than factory,
neither starched nor prissy, but soft, pliant,
tags frayed, ink faded, no laundry instructions,
no Dry Clean Only.

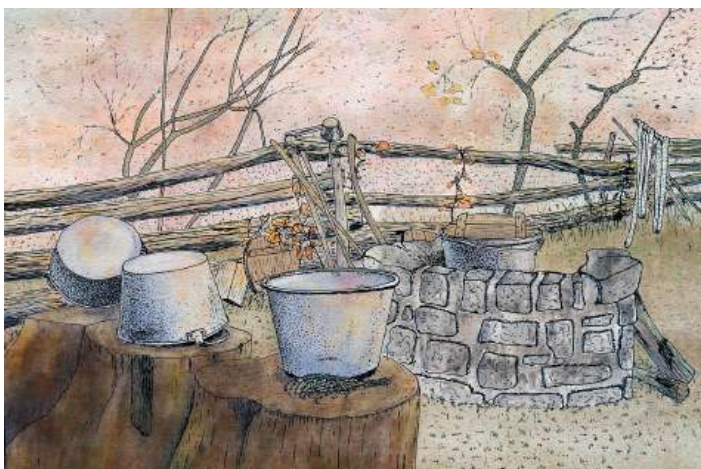
And whose body before mine found
comfort in wearing this wildflower top,
these farmer pants? I'll wear them and think
of the countryside where we live, growing things,
woodsy lanes where we walk.

Question for whoever left the sensible sweater
in sunset purple - Did it warm your back as it warmed
mine on a walk in late September? And Madame
of the hoop earrings, know that these silver discs stir
moon dreams and gypsy blood in a once closeted soul.

A suggestion of elegance in a black jersey lends
possibility, perhaps paired with hot pink pants to wear
on a date with my husband of fifty years. And the green
felt fedora with a partridge feather stuck at a jaunty angle,
perfect for reading poetry.

Plenty of delights at the local thrift shop,
no demands for me or for my life.
These items, like me, are survivors.
Dry clean? Nonsense. Iron? What's that?
I do not hand wash. I do not dry flat.

-*Sylvia Beaupré*



Pixabay image.

Mark your Calendar

Tuesday, March 25

6 p.m. – Weare School Board meeting
7:30 p.m. - Cable Committee meeting

Wednesday, March 26

7 p.m. - Master Plan Subcommittee meeting

Thursday, March 27

7 p.m. – Planning Board meeting

Monday, March 31

6:30 p.m. – Board of Selectmen meeting

Tuesday, April 1

7 p.m. – Zoning Board meeting

Thursday, April 3

6:30 p.m. - Cemetery Advisory Committee meeting
7 p.m. – Public Library Trustees meeting

Friday, April 4

11 a.m. – Weare Area Writers Guild meeting

Monday, April 7

6:30 p.m. – Board of Selectmen meeting

Wednesday, April 9

6:30 p.m. – John Stark School Board meeting
7 p.m. – Conservation Commission meeting
7 p.m. – Weare Democrats meeting

Contact Us

weareintheworldnews@gmail.com

Editor – Karen Lovett

Assistant Editor – Alyssa Small

Town News – Tom Clow

School News – Marge Burke

Community Outreach – Sharon Czarnecki